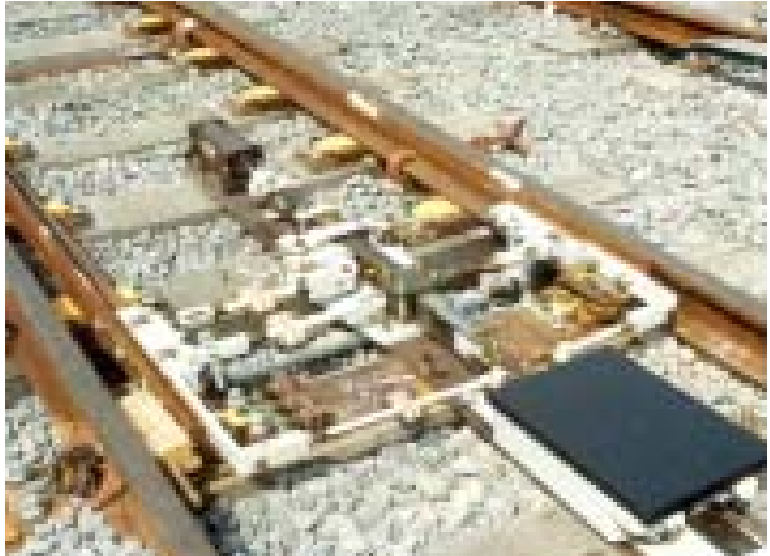


Jubilee Line Extension



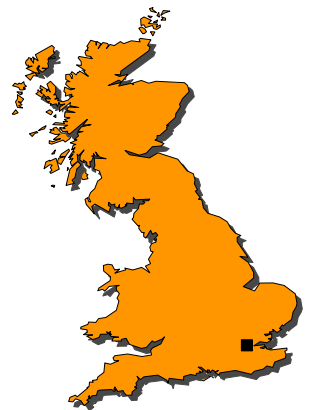
Nuttall Finchpalm's involvement in the Jubilee Line Extension works was wide ranging from points installation to equipment room wiring. Site teams operated from two depot locations, Stratford and Neasden, on a rotating day/night shift basis.

Installation teams on the extension carried out signal and train detection equipment installation. Further teams were deployed to carry out equipment room population and wiring and cable installation on both the extension and the upgrade projects.

Cable was installed from engineering trains in trackside locations and, where necessary, handpulled, particularly in depot locations. Training in confined space access, working at height, Hi-ab operation etc was put in place to ensure these operations were carried out safely. All competencies and the range of access certification required were managed to minimise the impact of peaks in the resource profile.

Equipment room wiring teams worked to designs issued by the Client, the management of which was critical in order that modifications were incorporated and progress against programme maintained.

Multi-skilled teams also carried out civil works on signal bases etc. and were involved in the management of materials and the effective operation of the site stores ensuring multiple site teams were adequately equipped to carry out works.



Location :
London

Client :
Westinghouse Signals

Date :
1996 - 2001