

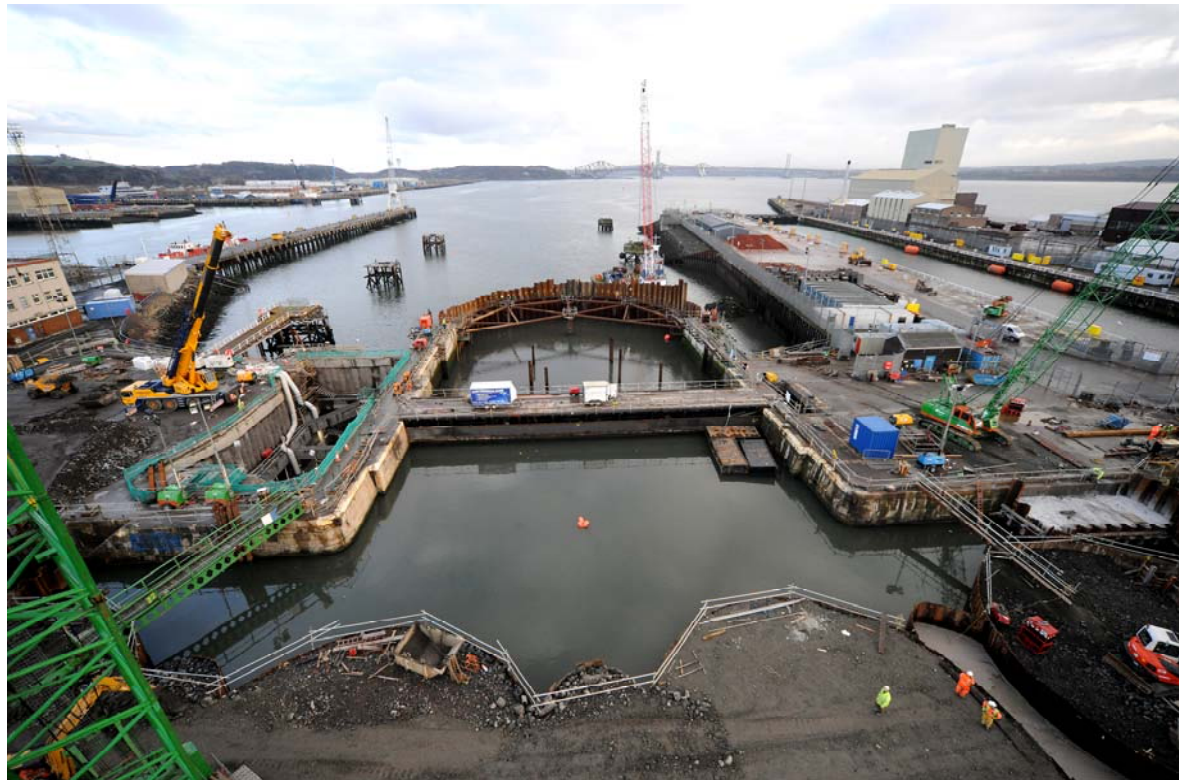
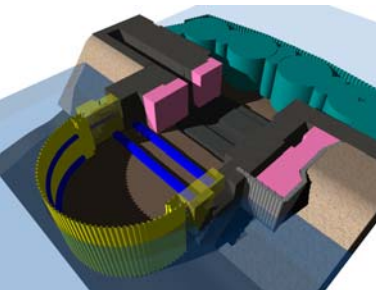
# Rosyth CVF Infrastructure Upgrade

**Client :**  
Babcock Marine

**Designer :**  
Halcrow

**Location :**  
Rosyth, Fife

**Date :**  
2008 - 2010



The project entails major modifications to the dockyard infrastructure carried out over two years. These will allow the dockyard to accommodate the new CVF Aircraft Carriers. The scope includes:

- Widening the entrance to No 1 Dock and the Direct Entrance
- Altar modifications and dock floor widening within No 1 Dock
- Goliath crane foundations and a dock floor skidding system
- Provision of new external Alignment Dolphins for the Direct Entrance

The project is characterised by major and complex temporary works designed by our in-house engineering resources. These include cellular cofferdams comprising 18.5m diameter circular cells with inter-connecting arcs. Additionally an Outer Direct Entrance cofferdam consists of a semi-circular arc 44m in diameter. These have entailed the use of 1,800T of temporary steel piles and more than 50,000T of fill material. Additionally, a 25m deep excavation was required for founding a new North Wall to the Direct Entrance and for this a secant piled cofferdam was installed.

BAM brought added value to the project by:

- Using in-house skills for the planning, design and construction of major cofferdam works
- Satisfying the Client regarding the safe and robust nature of the temporary works.
- Applying the group's in-house expertise marine piling, specialist geotechnical works and the use of tunnelling techniques for cutting concrete
- Early engagement with specialists to optimise solutions for the secant wall piling

Works at the Direct Entrance are to increase the width from 38m to 42m. Once the area between the two large cofferdams has been dewatered the modifications to the walls and caisson gate can be carried out.

This is the first major project within the CVF Carrier Build Programme. Completion on programme is critical. BAM Nuttall has been widely congratulated by Babcock Marine for successfully meeting the first important milestone at No 1 Dock.

BAM Nuttall Ltd  
St James House, Knoll Road,  
Camberley, Surrey. GU15 3XW

Tel: 01276 63484  
E-mail: [headoffice@bamnutall.co.uk](mailto:headoffice@bamnutall.co.uk)  
[www.bamnutall.co.uk](http://www.bamnutall.co.uk)