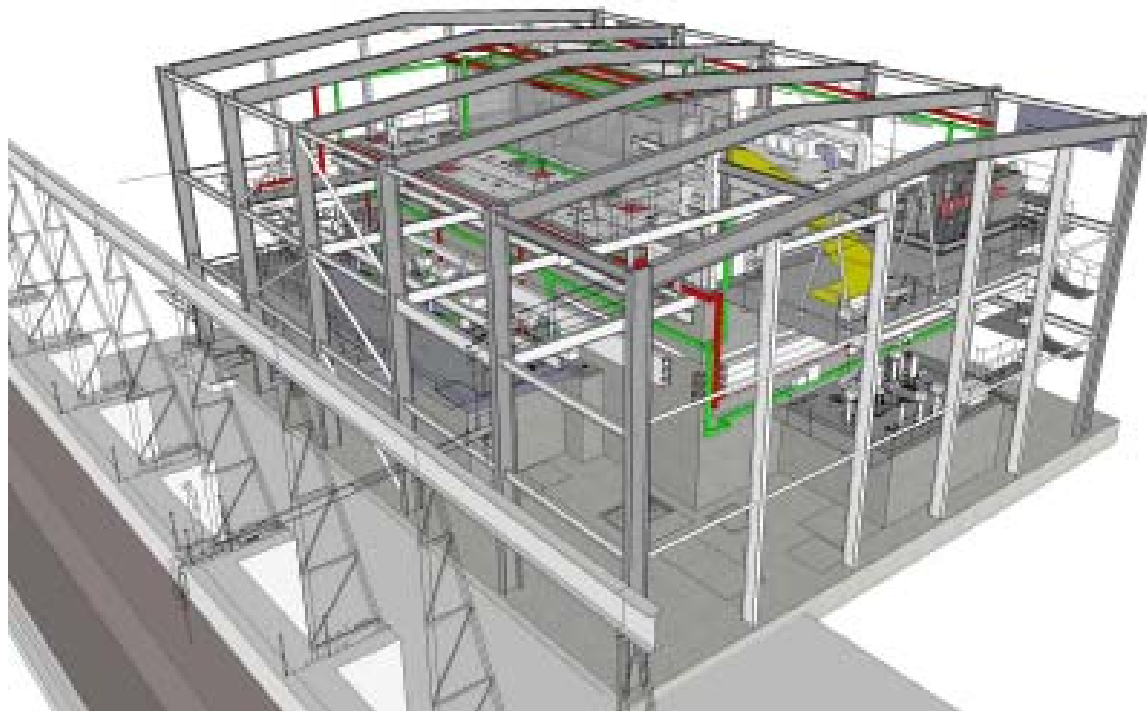


Sellafield – B29 LSTP – M&E Works

Client :
VT Nuclear Services Ltd

Location :
Sellafield, Cumbria

Date :
2006 - 2010



As part of an integrated legacy pond sludge treatment process for building B29, the local sludge treatment plant (LSTP) sludge is to be designed and built by BAM Nuttall. A key component of this was the M & E process plant within the civil building and containment cells.

The plant included:

- 3 stainless steel buffer storage tanks
- Thickening and sentencing tanks
- 3 100kW canned motor type recirculation pumps
- Ventilation system
- Control room and cabling services
- Sampling and monitoring systems
- Nuclear specification stainless steel pipework
- 70 actuated 'remotely maintainable' plug valves arranged on skids
- Compressed air, chilled / flush water systems
- Testing and inactive commissioning

New supply chain partners have been brought into Sellafield for some key orders such as the plug valves.

A key component of the success of the project has been the ability to manufacture and test packaged systems off site. This includes fitting the HVAC fans, filters and controls within an iso-container which can be lifted into position on top of the containment vault.

A team working environment with BNS Nuclear Services Ltd for the detail design has resulted in value engineering the HVAC systems from three containers down to one container.